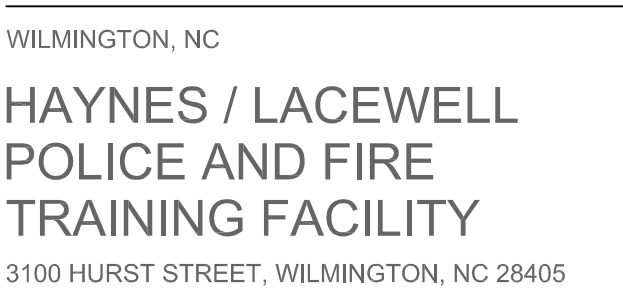


LINE	BEARING	DISTANCE
L1	S 67°09'19" E	41.69'
L2	S 49°12'27" E	10.25'

CITY OF WILMINGTON
P.O. BOX 1810 WILMINGTON, NC 28402
PID R04909-002-038-000
DB 005989 PG 001638
ZONED R5
VACANT LOT (WOODED)




DESIGNER

CLARK NEXSEN

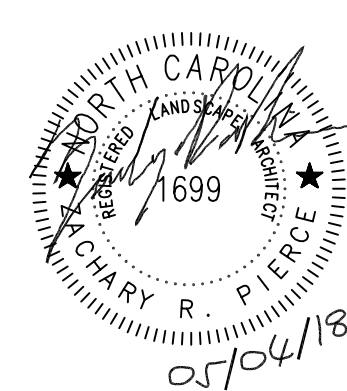
213 South Jefferson Street, Suite 1011
Roanoke, Virginia 24011
T: 540-982-0800 F: 540-982-1183
WWW.CLARKNEXSEN.COM
CLARK NEXSEN LICENSE NUMBER: C-1028

CONSULTANT



CLH DESIGN, P.A.
Regency Park
 400 Regency Forest Drive
 Suite 120
 Cary, North Carolina 27518
 Phone: (919) 319-8716
 Fax: (919) 319-7516
 LA: C-106, PE: C-1595

SEALS



SUBMITTAL
4 MAY 2018

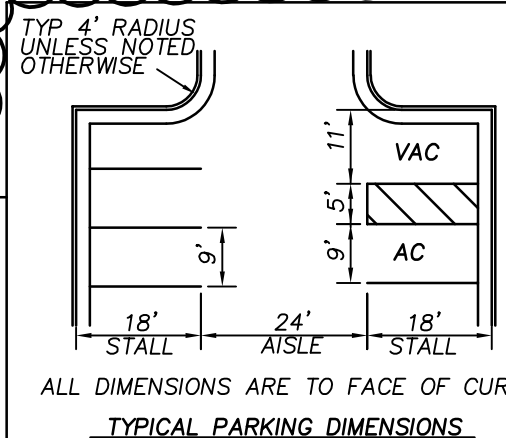
CONSTRUCTION DOCUMENTS

[illegible]

KEY NOTES

- (A) CONCRETE SIDEWALK, SEE DETAIL SHEET C705.
- (B) HEAVY DUTY ASPHALT PAVEMENT, SEE DETAIL SHEET C704.
- (C) LIGHT DUTY ASPHALT PAVEMENT, SEE DETAIL SHEET C704.
- (D) CONCRETE PAVEMENT, SEE DETAIL SHEET C704.
- (E) BRICK PAVERS, SEE DETAIL SHEET C704.
- (F) LIGHT POLE BY DUKE ENERGY.
- (G) CONCRETE PAVEMENT/SIDEWALK FLUSH WITH ASPHALT.
- (H) SEE ARCHITECTURAL PLANS FOR WALLS, CANOPY, COLUMNS, BUTTRESSES, BOLLARDS, ETC.
- (I) 8" TALL BLACK VINYL COATED CHAIN-LINK FENCE/GATE, SEE DETAIL SHEET C704.
- (J) 30" BLACK VINYL COATED CHAINLINK SWING GATE WITH COMMERCIAL GRADE SWING GATE OPERATOR (SMARTSWING DO 20 BY HYSECURITY OR APPROVED EQUAL), SEE ELECTRICAL.
- (K) ACCESSIBLE PARKING SIGNAGE, SEE DETAIL SHEET C718.
- (L) TRAFFIC CONTROL SIGNAGE, SEE TRAFFIC CONTROL NOTES THIS SHEET.
- (M) STOP BAR, SEE TRAFFIC CONTROL NOTES THIS SHEET.
- (N) PARKING SPACE MARKINGS, SEE TRAFFIC CONTROL NOTES THIS SHEET.
- (O) BENCH, SEE SPECS.
- (P) BIKE RACKS, SEE DETAIL SHEET C704.
- (Q) STANDARD METHOD OF ENDING CURB AND GUTTER, SEE DETAIL SHEET C704.
- (R) HI-VIS CROSSWALK, SEE TRAFFIC CONTROL NOTES THIS SHEET.
- (S) 24" CURB AND GUTTER, SEE DETAIL SHEET C705.

- (T)** ACCESSIBLE CURB RAMP, SEE DETAIL SHEET C705.
(U) TIE INTO EXISTING CURB AND GUTTER.
(V) CONCRETE WHEELSTOP, SEE DETAIL SHEET C704.
(W) 40-IN TALL, 10-IN DIA, D.O.S. D5-22 K12 RATED SECURITY BOLLARD WITH DECORATIVE COVER, SEE SPECS.
(Y) 30-FT FLAGPOLE, SEE SPECS.
(Z) 33" BLACK VINYL COATED CHAINLINK SWING GATE WITH SOLAR POWERED COMMERCIAL GRADE SWING GATE OPERATOR (DKS 6524 SWING GATE OPERATOR BY DOORKING OR APPROVED EQUAL) OPERATOR SHOULD BE PROVIDED A PROUDLY MARKED AND BE ABLE TO ACCOMMODATE REMOTE CONTROL OPERATION. OPERATOR SYSTEM SHALL INCLUDE A SENSOR TO PROHIBIT THE GATE CLOSING ON A VEHICLE.
(AA) PREFABRICATING, STAND-ALONE KEYPAD (DKS MODEL 1515 BY DOORKING OR APPROVED EQUAL) AND KNOBBOX, COORDINATE CONNECTION WITH GATE OPERATOR MANUFACTURER.
(BB) DETECTOR LOOP SENSOR IN PAVEMENT. COORDINATE INSTALLATION WITH GATE OPERATOR MANUFACTURER.
(CC) 8" TALL BLACK ORNAMENTAL FENCE, (3-RAIL, ECHELON PLUS, MAJESTIC STYLE BY AMERICAN FENCE OR APPROVED EQUAL)
- TYP. 4" RADIUS UNLESS NOTED OTHERWISE



GENERAL NOTES

1. ALL DIMENSIONS SHOWN ARE FACE OF CURB AND FACE OF BUILDING WALL, UNLESS OTHERWISE SHOWN.
2. CONTRACTOR SHALL BE RESPONSIBLE FOR FIELD VERIFICATION OF ALL DIMENSIONS SHOWN AND CONTACT THE ARCHITECT IF ANY DISCREPANCIES OCCUR.
3. CONSTRUCTION STAKE OUT IS THE RESPONSIBILITY OF THE CONTRACTOR.
4. ALL SIGNS AND PAVEMENT MARKINGS ARE TO MEET MCD (MANUAL ON UNIFORM TRAFFIC CONTROL DEVICES) STANDARDS.
5. PAVEMENT MARKINGS IN PUBLIC RIGHT-OF-WAYS AND FOR DRIVEWAYS ARE TO BE THERMOPLASTIC AND MEET CITY OF WILMINGTON AND/OR NCDOT STANDARDS.
6. ALL CONSTRUCTION SHALL BE IN ACCORDANCE WITH CITY OF WILMINGTON STANDARDS AND SPECIFICATIONS.
7. REPLACEMENT OF ANY BROKEN OR DAMAGED CONCRETE SIDEWALK PAVING OR CURBING THAT OCCURS DURING CONSTRUCTION IS THE RESPONSIBILITY OF THE CONTRACTOR.
8. ALL PARKING STALL RADII SHALL BE 4' UNLESS OTHERWISE NOTED.
9. ALL TRAFFIC CONTROL SIGNS AND MARKINGS OFF THE RIGHT-OF-WAY ARE TO BE MAINTAINED BY THE PROPERTY OWNER IN ACCORDANCE WITH MCDOT STANDARDS.
10. NO PORTION OF THIS PROPERTY IS LOCATED IN THE 100 YEAR FLOOD ZONE PER FIRM PANEL 3720313800 J DATED APR. 3, 2008.
11. ALL PARKING STALL MARKINGS AND LANE ARROWS WITHIN THE PARKING AREA SHALL BE WHITE.
12. PERMITTING OF BUSINESS IDENTIFICATION SIGNAGE IS A SEPARATE PROCESS. NCDOT/CITY OF WILMINGTON WILL NOT ALLOW OBSTRUCTIONS WITHIN THE RIGHT-OF-WAY.
13. ROLL OUT CANS WILL BE UTILIZED FOR THIS PROPERTY, THEREFORE NO DUMPSITER SCREENING IS REQUIRED.

TRAFFIC CONTROL NOTES

1. ALL SITE SIGNAGE SHALL BE IN ACCORDANCE WITH THE MANUAL ON UNIFORM TRAFFIC CONTROL DEVICES (MUTCD) AND NCDDOT STANDARDS.

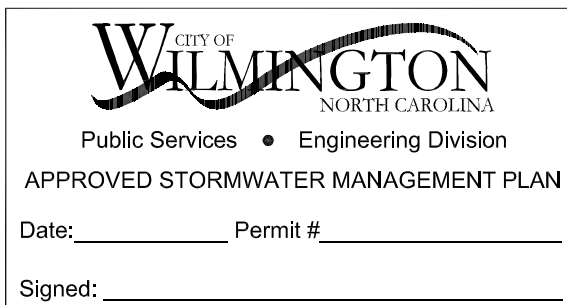
SIGN	MUTCD STD.	SIZE
STOP	R1-1	30"x30"
2. ALL SIGNS SHALL BE MOUNTED WITH 7-FT. MIN. VERTICAL CLEARANCE TO THE BOTTOM OF THE SIGN ON 2-LB. GALV. STEEL U-CHANNEL POST SET IN 3-FT. DIA. CONCRETE FOOTING.
3. ALL PAVEMENT MARKINGS SHALL BE IN ACCORDANCE WITH THE MUTCD AND NCDDOT STANDARDS AND THE PROJECT SPECIFICATIONS.

MARKING	NCDDOT STD.	SIZE	COLOR
PARKING SPACE	—	4-IN	WHT.
NO PARKING - FIRE LANE *	—	4-IN	WHT.
SOLID	—	4-IN	WHT.
CROSSWALK	1205.07(HI-VIS)	24-IN	WHT.
STOP BAR	—	24-IN	WHT.

* NO PARKING - FIRE LANE MARKING SHALL CONSIST OF A 4" SOLID WHITE STRIPE AND 8" HIGH WHITE TEXT "NO PARKING - FIRE LANE" AT 50' INTERVALS. PROVIDE IN ALL PAVED AREAS DESIGNATED BY FIRE MARSHALL.

(BID SHALL INCLUDE STRIPING AND SIGNAGE AS SHOWN PLANS PLUS AN EXTRA 500 LF OF NO PARKING FIRE LANE STRIPING AND 5 NO PARKING FIRE LANE SIGNS.)
4. ALL PAVEMENT MARKINGS SHALL BE ALKYD-RESIN TYPE PAINT PER CITY OF WILMINGTON STANDARDS.
5. ALL SIGNAGE SHALL BE FIELD STAKED AND THE LOCATIONS APPROVED BY CLH DESIGN PRIOR TO SIGN INSTALLATION.
6. ALL TRAFFIC CONTROL SIGNS AND MARKINGS OFF THE RIGHT-OF-WAY ARE TO BE MAINTAINED BY THE PROPERTY OWNER IN ACCORDANCE WITH MUTCD STANDARDS.

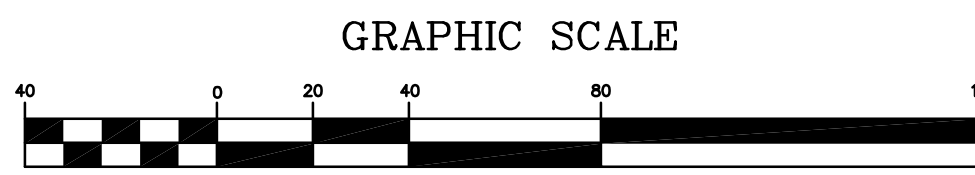
<u>APPROVED CONSTRUCTION PLAN</u>	
<u>NAME</u>	<u>DATE</u>
PLANNING _____	
TRAFFIC _____	
FIRE _____	



SHEET

STAKING PLAN

C101



DESIGN: ZRP
DRAWN: YA, DL
REVIEW: ZRP, KAL

CN 5938
CLH 16-161